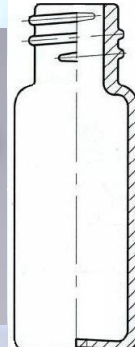
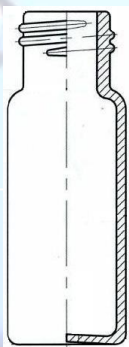


Membrane Solutions

MS® Sample Vials for Chromatography

11mm Crimp & Screw Cap 2ml 12x32 8-425 and 9-425



HRMalytic +61(0)3 9762 2034
ECHnology Pty Ltd
Australian Distributors; Importers & Manufacturers

MS® Sample Vials

MS® Sample vial are made from first hydrolytical class, borosilicate glass, compliant with the requirements of U.S. and European Pharmacopeia which improves your laboratory productivity, by reducing costs and saving time. These products considerably reduce the risk of analytical test results compromised by ghost peaks, damaged needles or dislodged septa, decreasing analysis failures and sample reruns.

MS® offer Type 1, 51-expansion glass vials and type-2, 33- expansion glass vials.

Feature

- LCGC certificate
- High quality glass Type 1, 51-expansion glass (clear and amber) and type-2, 33- expansion glass (only clear)
- Computerized camera system for quality control throughout the manufacturing process to test critical dimensions, including Height, Diameter, Bottom Thickness and Neck/Thread.
- Compatible with a wide range of HPLC, LCMS and GC Instruments
- Pre-packs including 100 vials and caps for ease and convenience in ordering
- Vials and caps and septas also available separately
- Meet standards set by governing bodies
- Tightest dimensional tolerances in industry

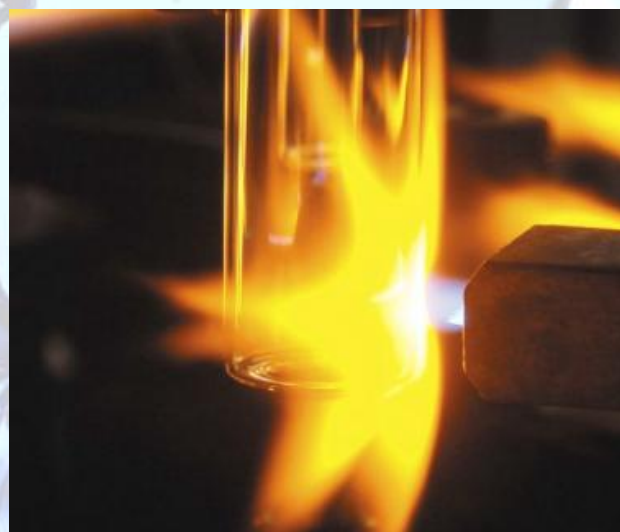
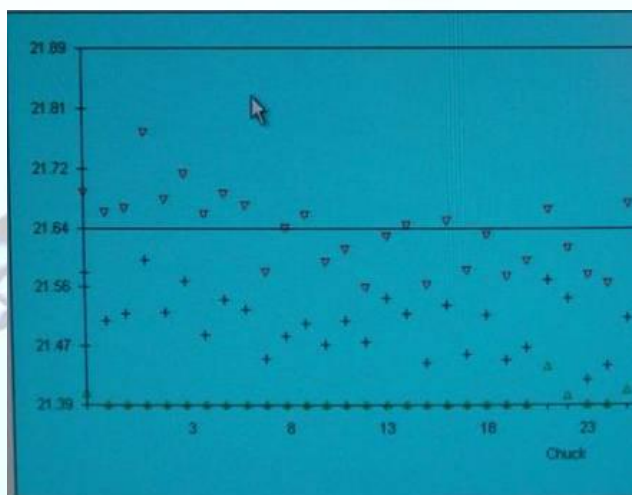
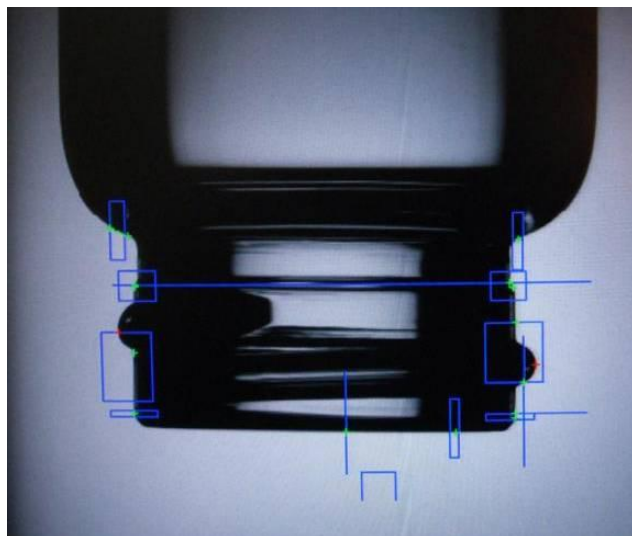
Application

- HPLC instruments
- LCMS instruments
- GC instruments

Vial Closures Guide

Available in three types: crimp, snap and screw cap.

Cap Design	Strength Design	Comments
Crimp	Excellent seal	Requires tools
Snap	Moderate seal	Fast, no tools
Screw	Excellent seal	Universal



Septa Selection Guide

PTFE

- Recommended for single injection application.
- Ideal for use in MS applications
- Excellent solvent resistance and chemical compatibility
- Does not reseal upon punching
- Not for Long-term sample storage

PTFE/Silicone

- Recommended for multiple injection and sample storage
- Excellent resealing
- PTFE chemical resistance until punctured, then will have the chemical compatibility of silicone
- Working temperature range from -40 °C to 200 °C

- Pre-slit PTFE/Silicone
- Prevent vacuum formation in vials
- Eliminates coring from bottom draw-port needles
- Good resealing capabilities
- Recommended for multiple injections
- PTFE chemical resistance until punctured, then will have the chemical compatibility of silicone
- Working temperature range from -40 °C to 200 °C

Vials Selection Guide

- Type 1, 51-expansion borosilicate glass
- type-2, 33- expansion glass
- Deactivated glass (DV)

Treated with gas phase reactive organosilane to produce a hydrophobic glass surface. Can be stored indefinitely.

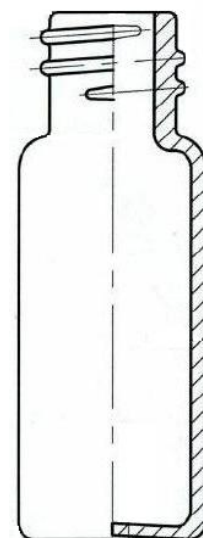
- Headspace Vials

Uniform glass thickness which insures even heat distribution for consistent sampling reliability.

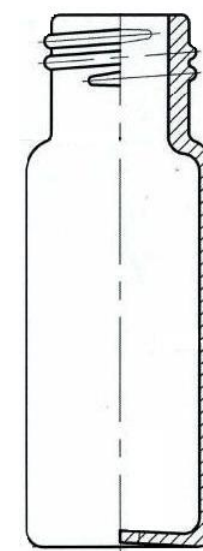


Ordering Information

Screw Top, Standard Opening Vials		
Part No.	Description	Unit
LBSV012C	2ml Clear vial, 8-425 screw top	100/pk
LBSV032C	2ml Clear vial, 8-425 screw top, graduated with writing area	100/pk
LBSV012A	2ml Amber vial, 8-425 screw top	100/pk
LBSV032A	2ml Amber vial, 8-425 screw top, graduated with writing area	100/pk
Screw caps - 8-425, polypropylene plastic for standard screw top vial		
LBSV012	Black screw cap with hole, for 2ml 8-425 screw top vial	100/pk
LBSV032	Blue screw cap with hole, for 2mL 8-425 screw top vial	100/pk
Septa for 8-425 Screw caps		
LBSV02RS	White PTFE/red silicone septa, for 2ml 8-425 screw top vial	10000/pk
LBSV02SS	Red PTFE/white silicone septa, for 2ml 8-425 screw top vial	10000/pk
Screw caps + Septa for standard screw top vial		
LBSV012CRS	White PTFE/red silicone septa + Black screw cap with hole, for 2ml 8-425 screw top vial	100/pk
LBSV012CSS	Red PTFE/white silicone septa + Black screw cap with hole, for 2ml 8-425 screw top vial	100/pk

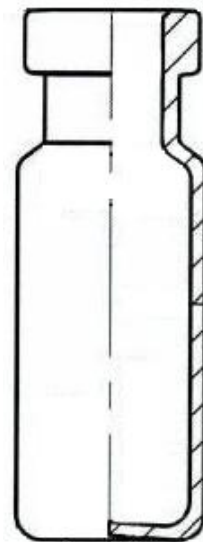


Screw Top, Wide Opening Vials		
Part No.	Description	Unit
LBSV002C	2ml Clear vial, 9-425 screw top	100/pk
LBSV022C	2ml Clear vial, 9-425 screw top, graduated with writing area	100/pk
LBSV002A	2ml Amber vial, 9-425 screw top	100/pk
LBSV022A	2ml Amber vial, 9-425 screw top, graduated with writing area	100/pk
Screw caps - 9-425, polypropylene plastic for Wide Opening screw top vial		
LBSV002	Blue screw cap with hole, for 2ml 9-425 screw top vial	100/pk
Septa for 9-425 Screw caps		
LBSV03RS	White PTFE/red silicone septa, for 2ml 9-425 screw top vial	10000/pk
LBSV03SS	Red PTFE/white silicone septa, for 2ml 9-425 screw top vial	10000/pk
LBSV23SS	Blue PTFE/white silicone septa, Pre-slit, for 2mL 9-425 screw top vial	10000/pk
Screw caps + Septa for Wide Opening screw top vial		
LBSV002CRS	White PTFE/red silicone septa + Blue screw cap with hole, for 2ml 9-425 screw top vial	100/pk
LBSV102CSS	Red PTFE/white silicone septa + Blue screw cap with hole, for 2ml 9-425 screw top vial	100/pk
LBSV222CSS	Blue PTFE/white silicone septa, Pre-slit + Blue screw cap with hole, for 2ml 9-425 screw top vial	100/pk



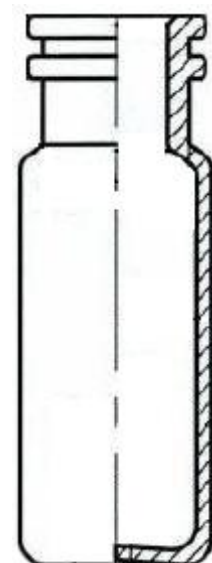
Crimp Top, Wide Opening Vials

Part No.	Description	Unit
LBSV042C	2ml Clear vial, crimp top	100/pk
LBSV062C	2ml Clear vial, crimp top, graduated with writing area	100/pk
LBSV042A	2ml Amber vial, crimp top	100/pk
LBSV062A	2ml Amber vial, crimp top, graduated with writing area	100/pk
Crimp seal - aluminum cap with large hole, for crimp top vial		
LBSV022	Aluminium cap 11 mm for 2ml crimp top vial	100/pk
Septa for Crimp seal - aluminum cap		
LBSV04RS	White PTFE/red silicone septa, for 2ml crimp vial	10000/pk
LBSV04SS	Red PTFE/white silicone septa, for 2ml crimp vial	10000/pk
Aluminum cap + Septa for Wide Opening Crimp top vial		
LBSV112CRS	White PTFE/red silicone septa+ Aluminium cap, for 2ml crimp top vial	100/pk
LBSV122CRS	Red PTFE/white silicone septa + Aluminium cap, for 2ml crimp top vial	100/pk



Snap Ring Top, Wide Opening Vials

Part No.	Description	Unit
LBSV052C	2ml Clear vial, snap top	100/pk
LBSV072C	2ml Clear vial, snap top, graduated with writing area	100/pk
LBSV052A	2ml Amber vial, snap top	100/pk
LBSV072A	2ml Amber vial, snap top, graduated with writing area	100/pk
Snap caps- for snap ring top vial with bonded-in septa		
LBSV202CSS	Red PTFE/white silicone septa + Blue snap cap, for 2ml 9-425 Snap Ring Top vial	100/pk



HRMalytic +61(0)3 9762 2034
ECHnology Pty Ltd
 Australian Distributors; Importers & Manufacturers

2ml 12*32mm Vials, flat base, clear and amber

Standard Opening Crimp Top 8-425 1. Narrow neck crimp top vials fit many older GC autosamplers.
2. Compatible with all 11mm crimp seals and 5mm nominal diameter inserts

Wide Opening Crimp Top 9-425 1. Easier to fill
2. Used with either 11mm aluminum seals

Standard Opening Screw Thread 8-425 Standard neck vial—8-425 thread finish, 12x32mm outer profile

Wide opening Screw Thread 9-425 Wide neck vial is easy to fill

11mm Snap 1. Wide opening vial is easier to fill and provides a larger target area for the autosampler needle
2. Used with snap caps

4ml 15*45mm Vials, flat base

Screw Thread, Crimp Snap Vials

Headspace Vials

Beveled Edge, Square Rim

Also Available with 10ml, 20ml, and 40ml vials.

More information please visit our website www.membrane-solutions.com.

Or mail us at : info@membrane-solutions.com



Membrane Solutions LLC